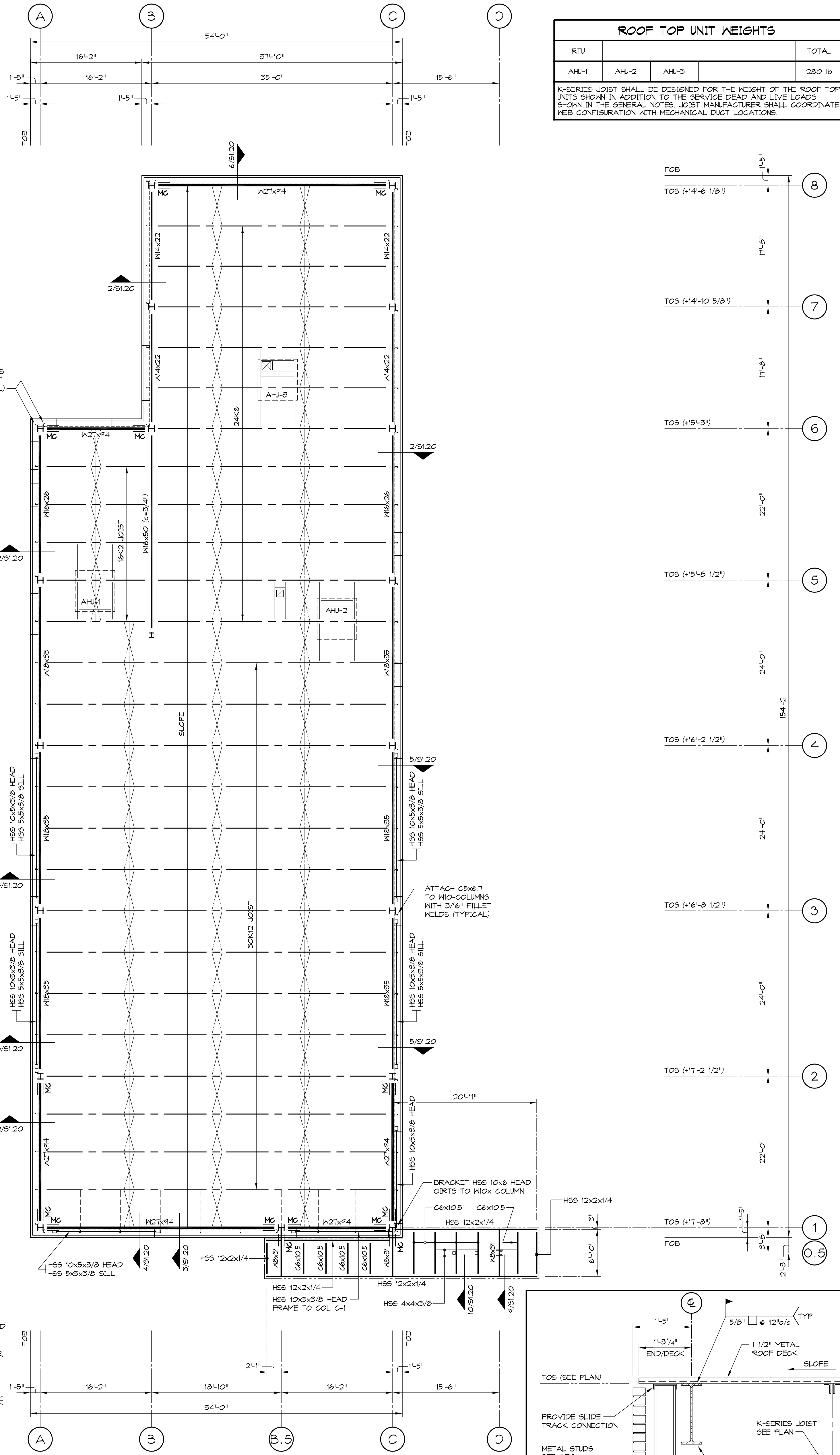




# 1 ROOF FRAMING PLAN

SCALE: 1/8" = 1'-0"



ROOF TOP UNIT WEIGHTS			
RTU	AHU-1	AHU-2	AHU-3
			280 lb

K-SERIES JOIST SHALL BE DESIGNED FOR THE WEIGHT OF THE ROOF TOP UNITS SHOWN IN ADDITION TO THE SERVICE DEAD AND LIVE LOADS SHOWN IN THE GENERAL NOTES. JOIST MANUFACTURER SHALL COORDINATE KEB CONFIGURATION WITH MECHANICAL DUCT LOCATIONS.

## ROOF FRAMING PLAN SHEET NOTES

- TOS - INDICATES REFERENCED TOP OF STEEL ELEVATION ABOVE FINISHED FLOOR ELEVATION.
- ALL STRUCTURAL STEEL COLUMNS, BEAMS, GIRDERS TO CONFORM TO ASTM A992, F<sub>y</sub>=50 ksi OR ASTM A572, ENHANCED, GRADE 50, STRUCTURAL ANGLE, CHANNEL, BEAM AND PLATE TO ASTM A572, F<sub>y</sub>=50 ksi; STRUCTURAL TUBING, ASTM A500, GRADE B, F<sub>y</sub>=46 ksi; STRUCTURAL PIPE COLUMNS, ASTM A501, F<sub>y</sub>=36 ksi.
- PROVIDE DIAG. JOIST BRIDGING AS INDICATED ON PLANS. USE L1 1/4"x1 1/4" ANGLES. SEE DETAIL 19 ON SHEET 50.20.
- METAL ROOF DECK IS 1 1/2" DEEP, TYPE B, 20 GAGE, GALVANIZED, WITH A MINIMUM OF THREE SPAN SUPPORT CONDITION (Roof & Canopy).

MINIMUM SECTION PROPERTIES:  
WELD FASTENER LAYOUT:

1/2"x20" 1/4", 5/8"x24" 1/2", 5/8"x24" 1/2", F<sub>y</sub>=50 ksi  
3/8" PATTERN, 5/8" MINIMUM DIAMETER PUDDLE WELDS

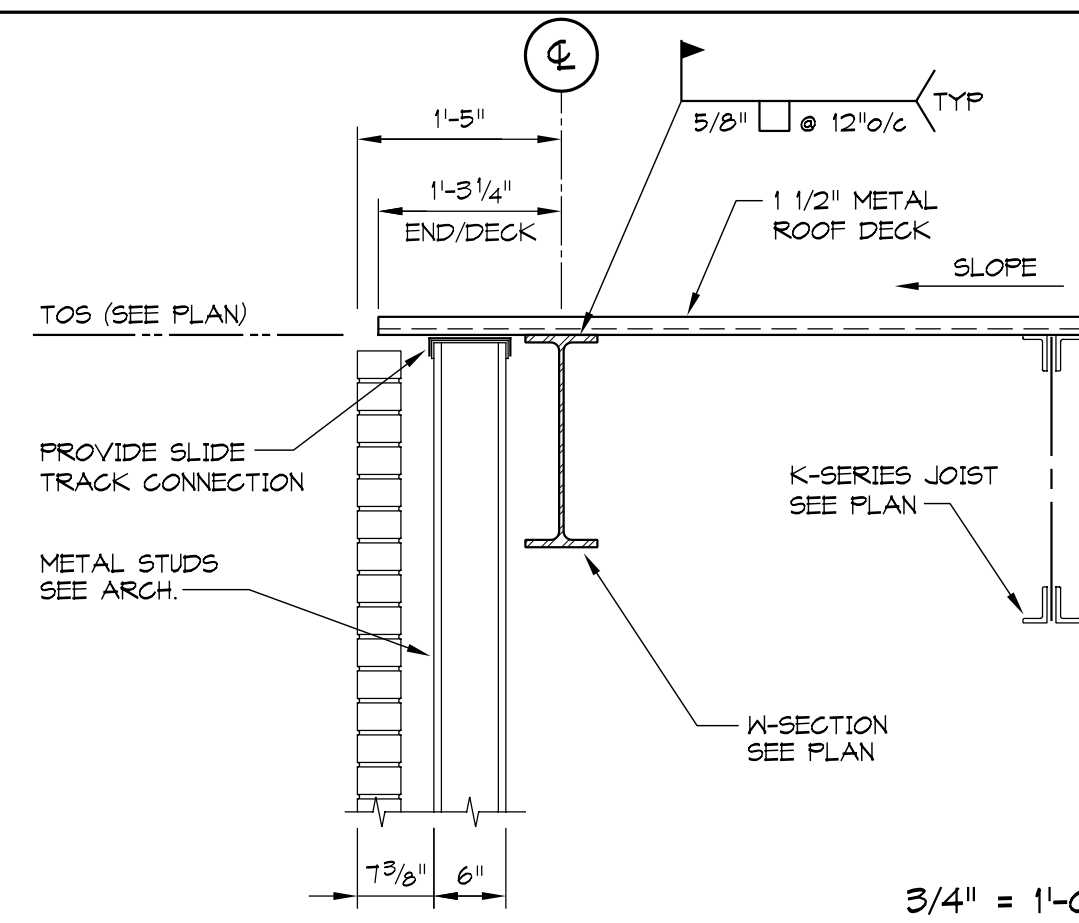
EXTREME EDGE SIDE CONNECTORS:  
SIDE LAP CONNECTORS:  
TYPICAL (UNLESS NOTED OTHERWISE)

5/8" DIAMETER PUDDLE WELDS AT 12" o/c MAX. (edge)  
#10 HD HEX NUTS AND WASHERS AT 12" o/c MAX. (side lap).

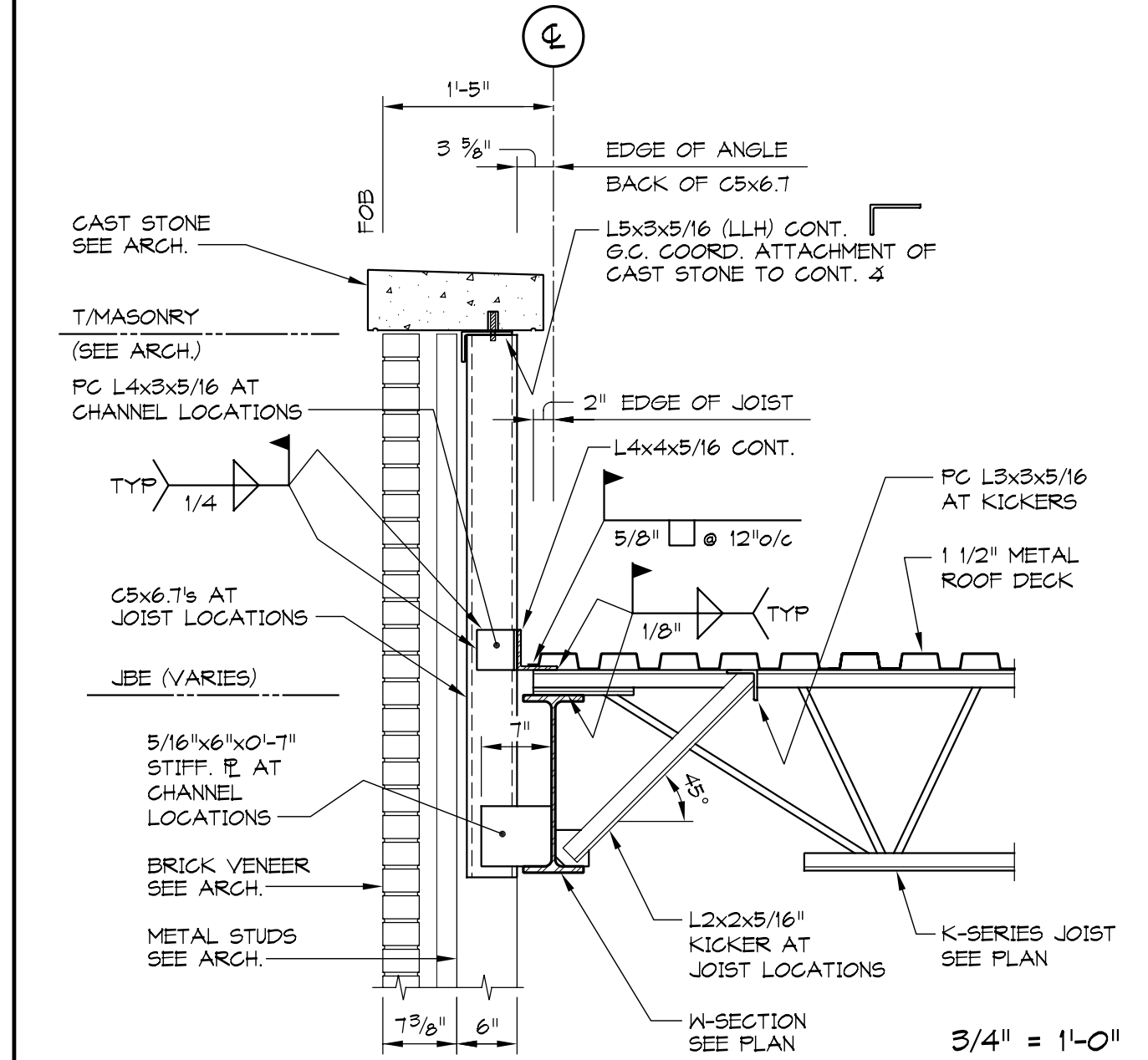
- GENERAL CONTRACTOR SHALL COORDINATE WITH THE JOIST MANUFACTURER AND THE MECHANICAL CONTRACTOR THE LAYOUT AND PROFILE OF ALL STEEL JOISTS WITH THE LAYOUT OF ALL DUCTWORK TO BE INSTALLED WITHIN THE STEEL JOISTS. THE GENERAL CONTRACTOR SHALL PROVIDE A COPY OF THE STEEL JOIST SHOP DRAWINGS TO THE MECHANICAL CONTRACTOR FOR COORDINATION OF MECHANICAL DUCT LAYOUT. ALL COORDINATION SHALL BE DONE PRIOR TO THE FABRICATION OF ANY JOIST.

- INDICATES ROOF OPENING. COORDINATE SIZE AND LOCATION WITH ARCHITECTURAL AND MECHANICAL DRAWINGS. PROVIDE L3x3x1/4" FRAME AROUND ALL ROOF OPENINGS. SEE TYPICAL DETAIL 11/50.20.

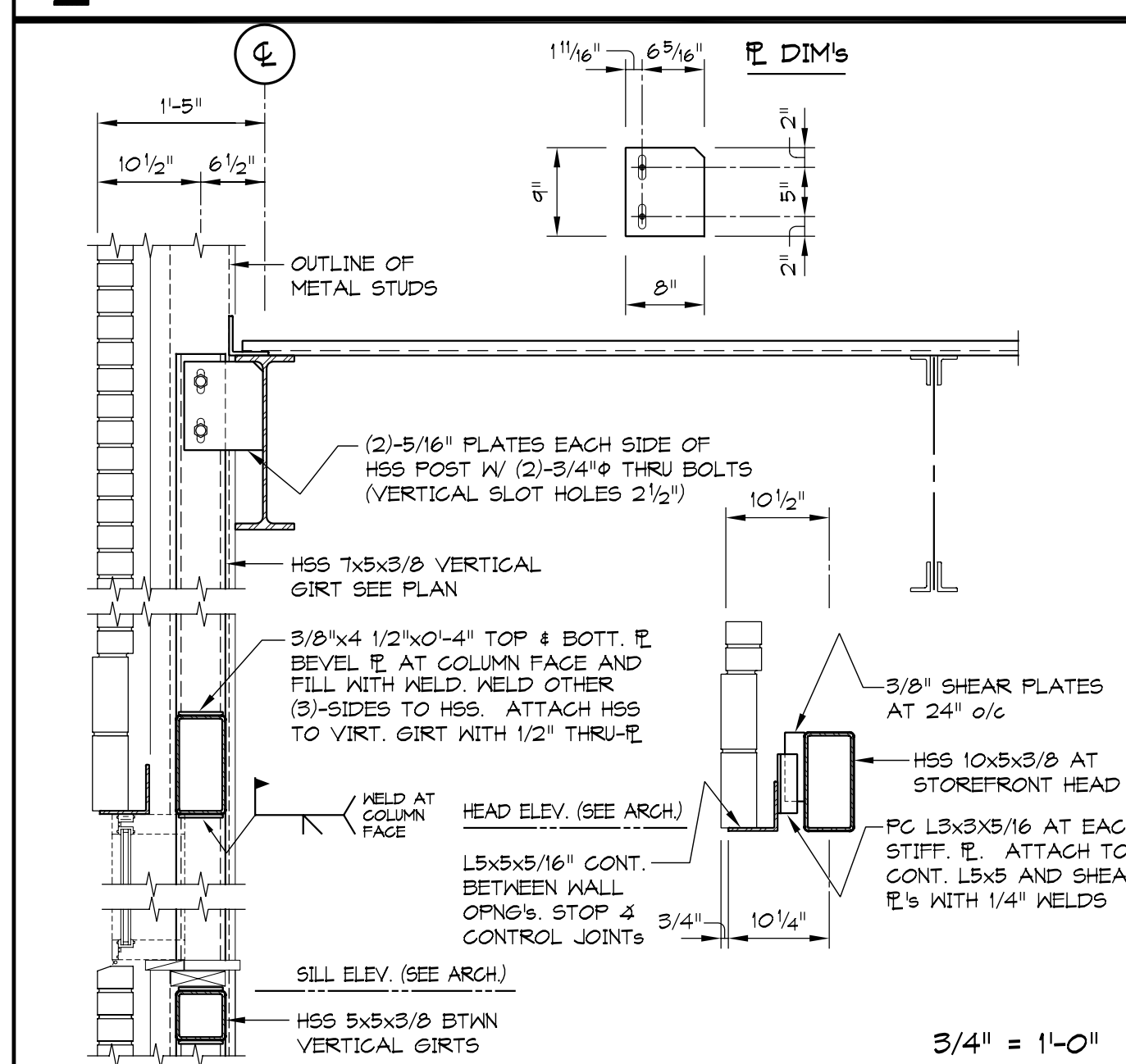
- INDICATES MOMENT CONNECTION (WELDED) REQUIRED. SEE TYPICAL DETAIL SHEET 7/51.20 & 8/51.20.



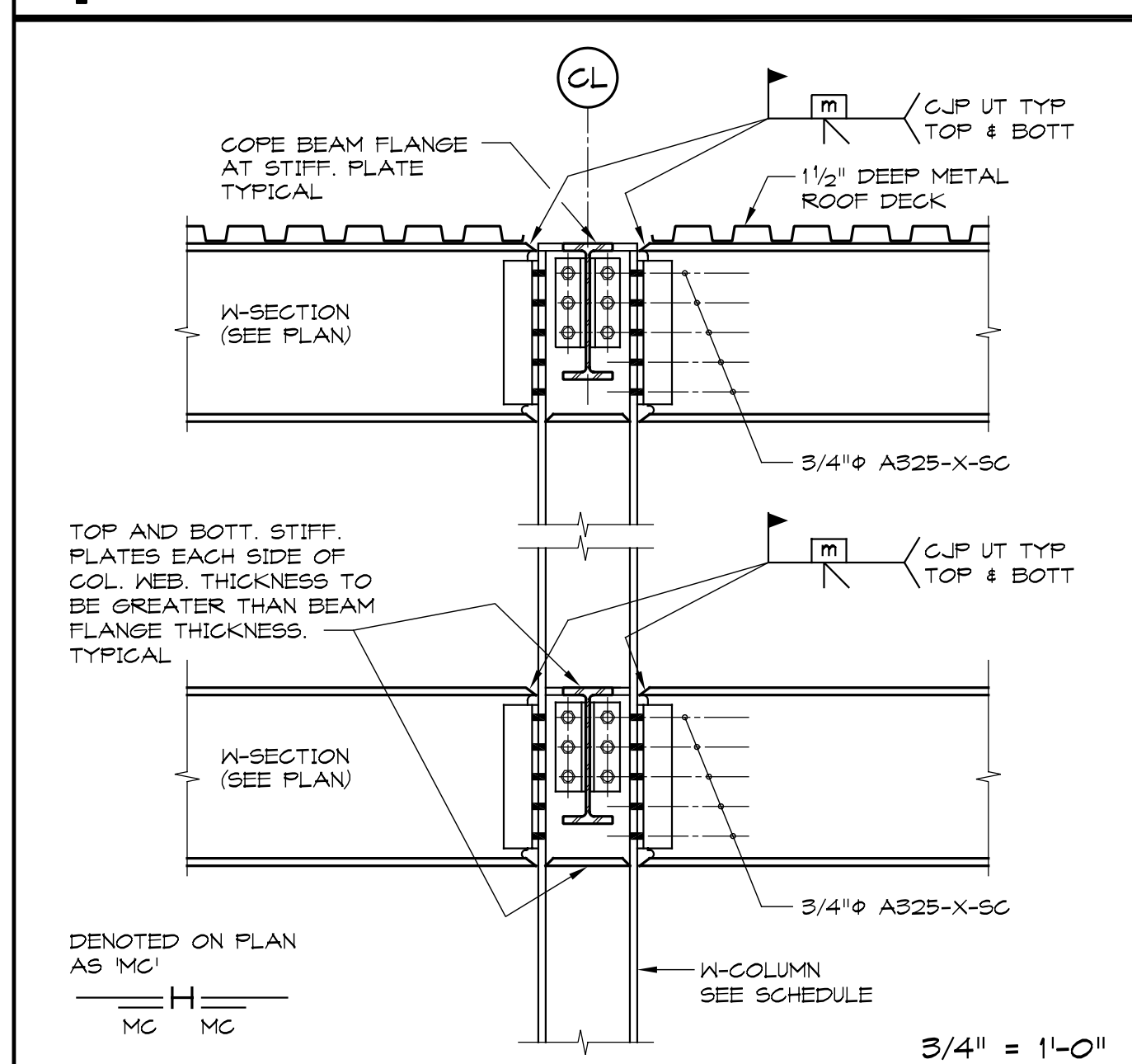
6 SECTION AT EXTERIOR WALL



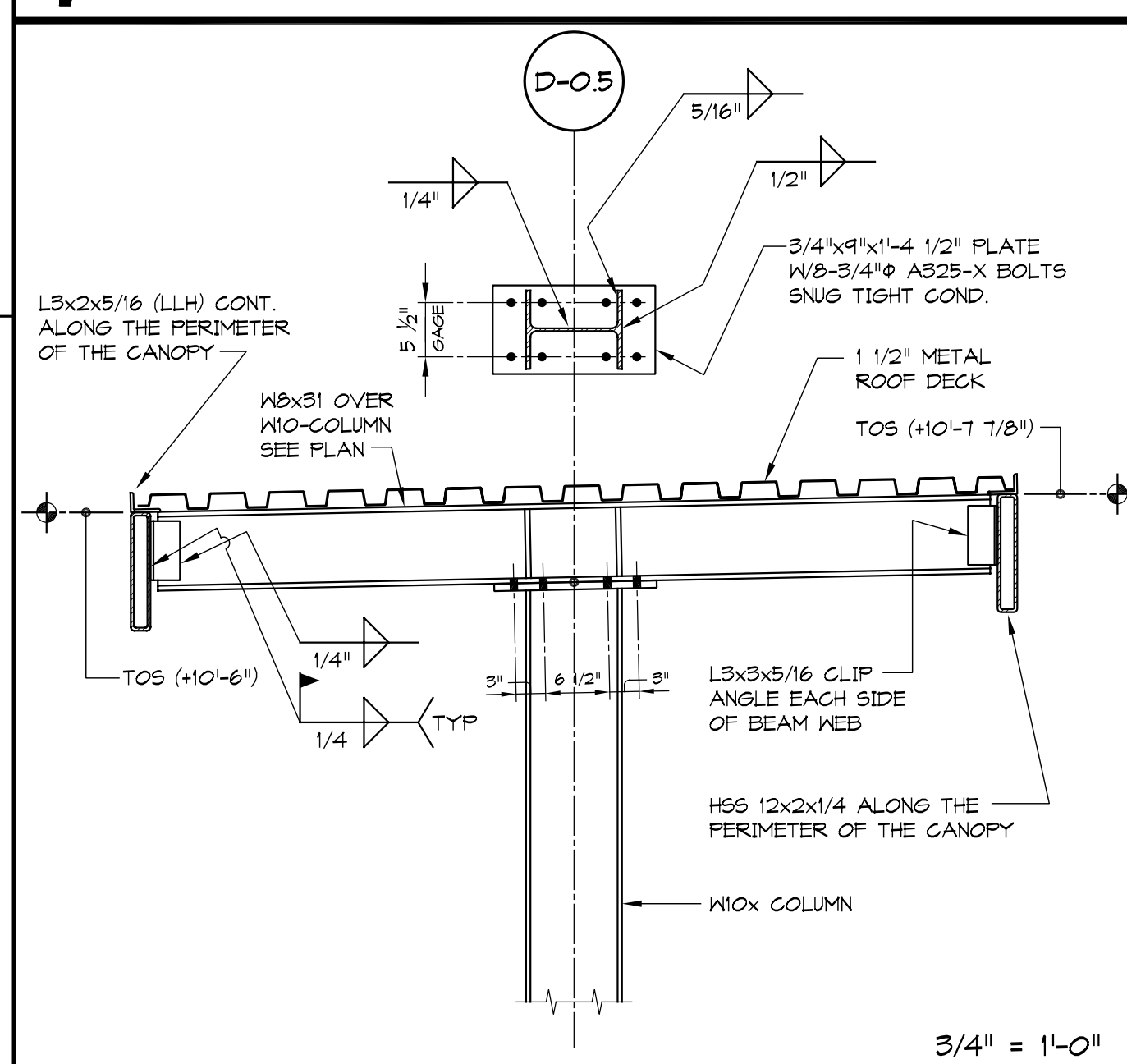
2 SECTION AT ROOF



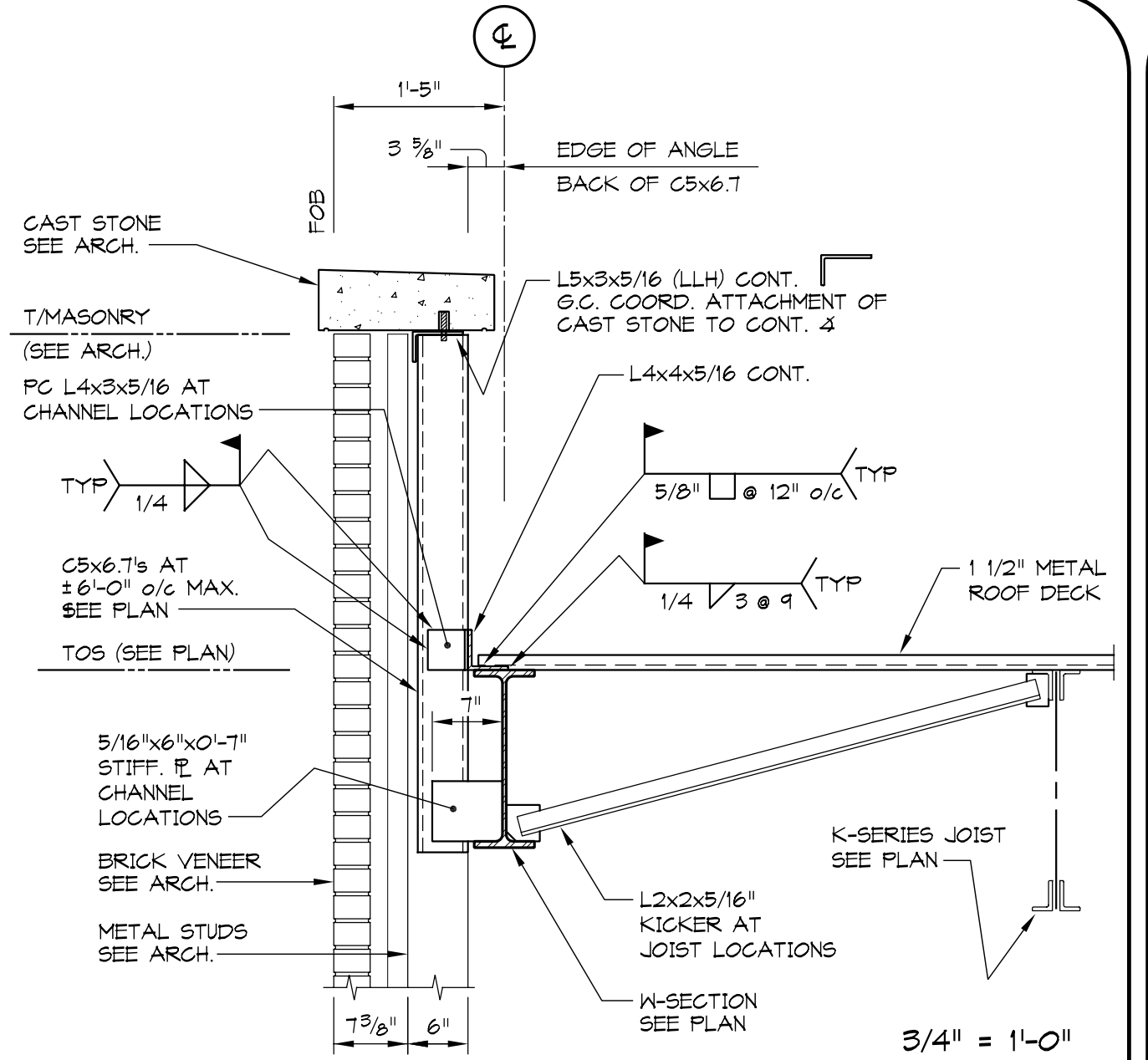
4 SECTION AT EXTERIOR WALL OPENING



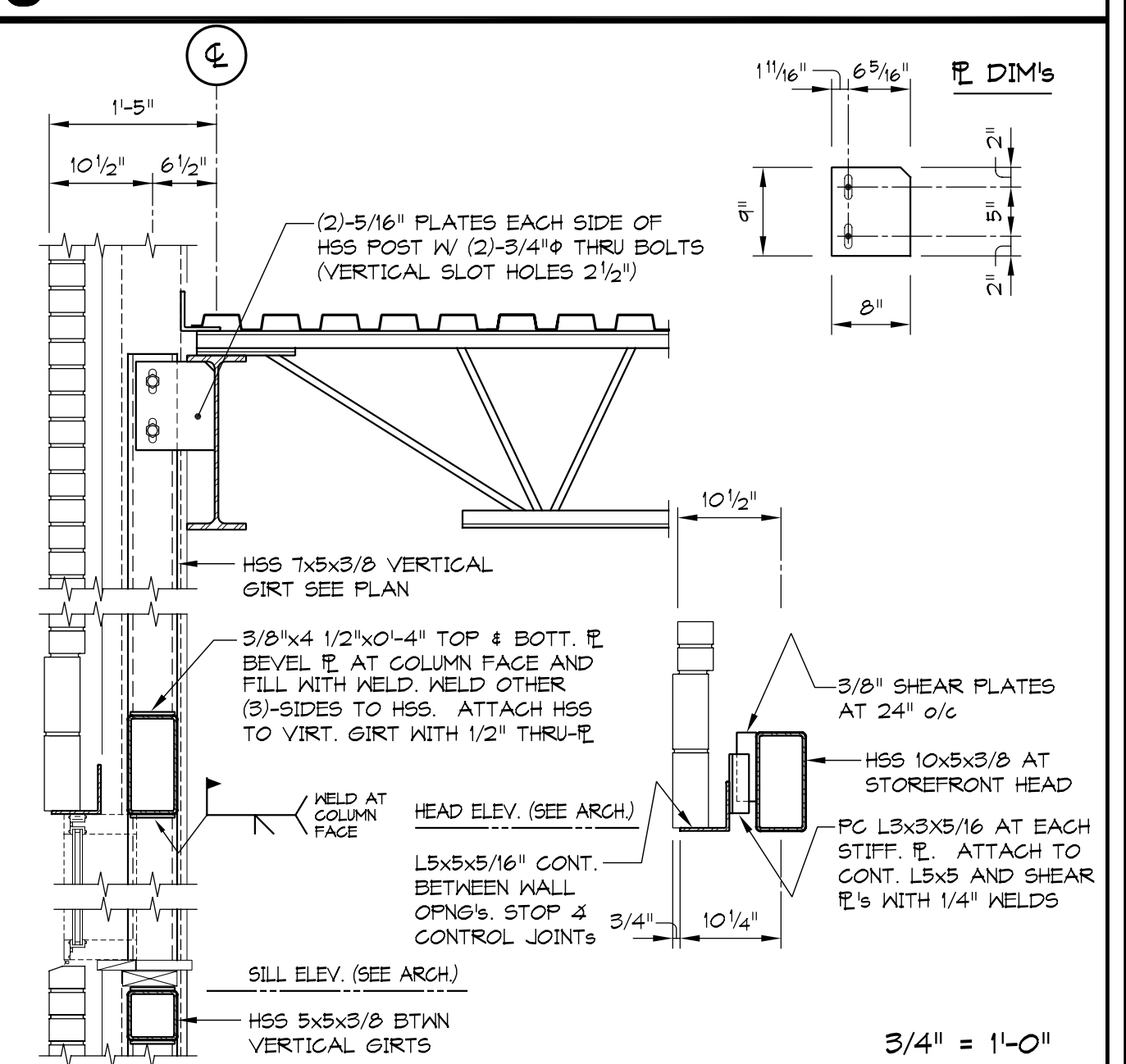
7 TYPICAL BM-COL MOMENT CONNECTION



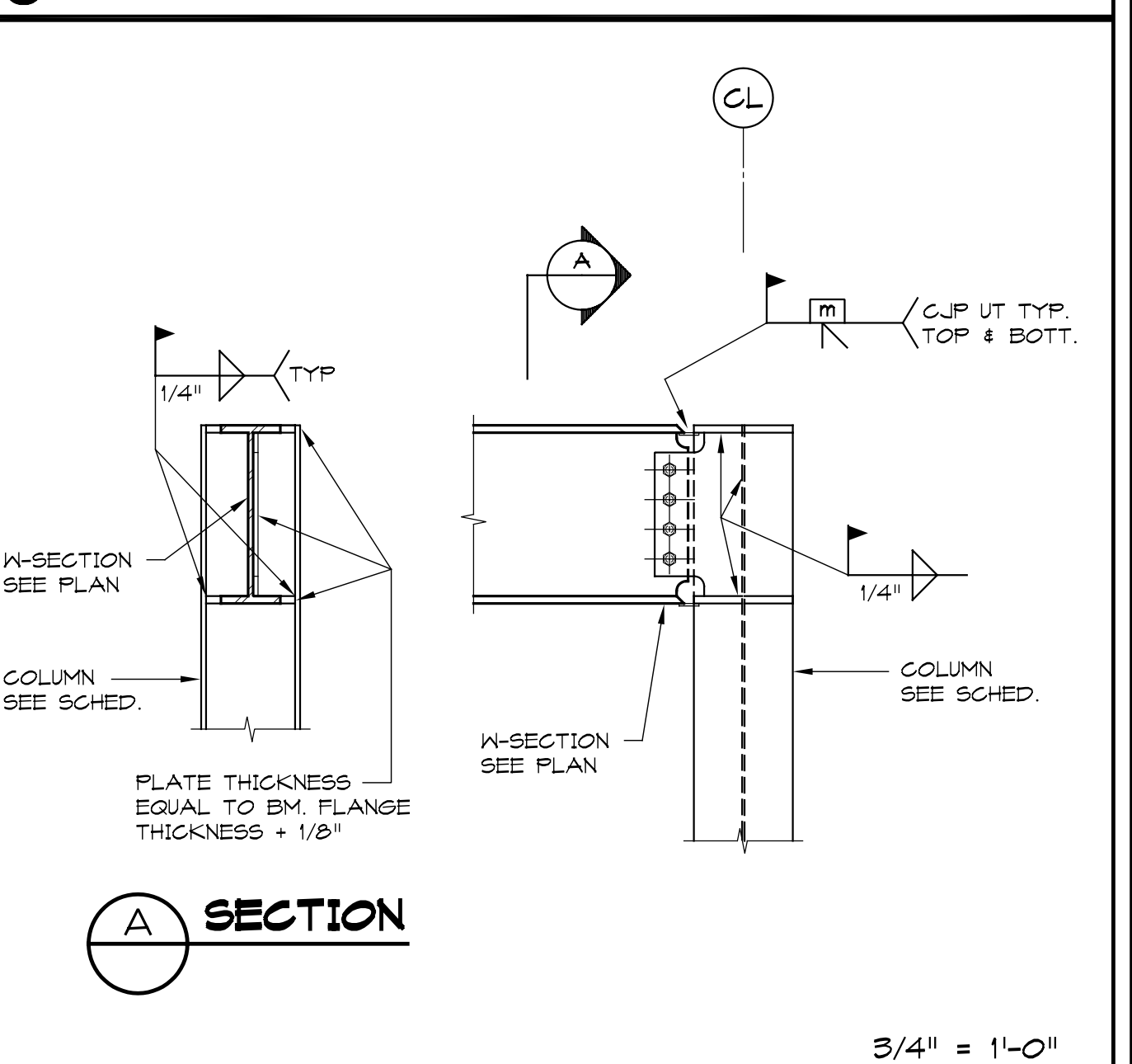
9 SECTION AT ENTRY CANOPY COLUMN



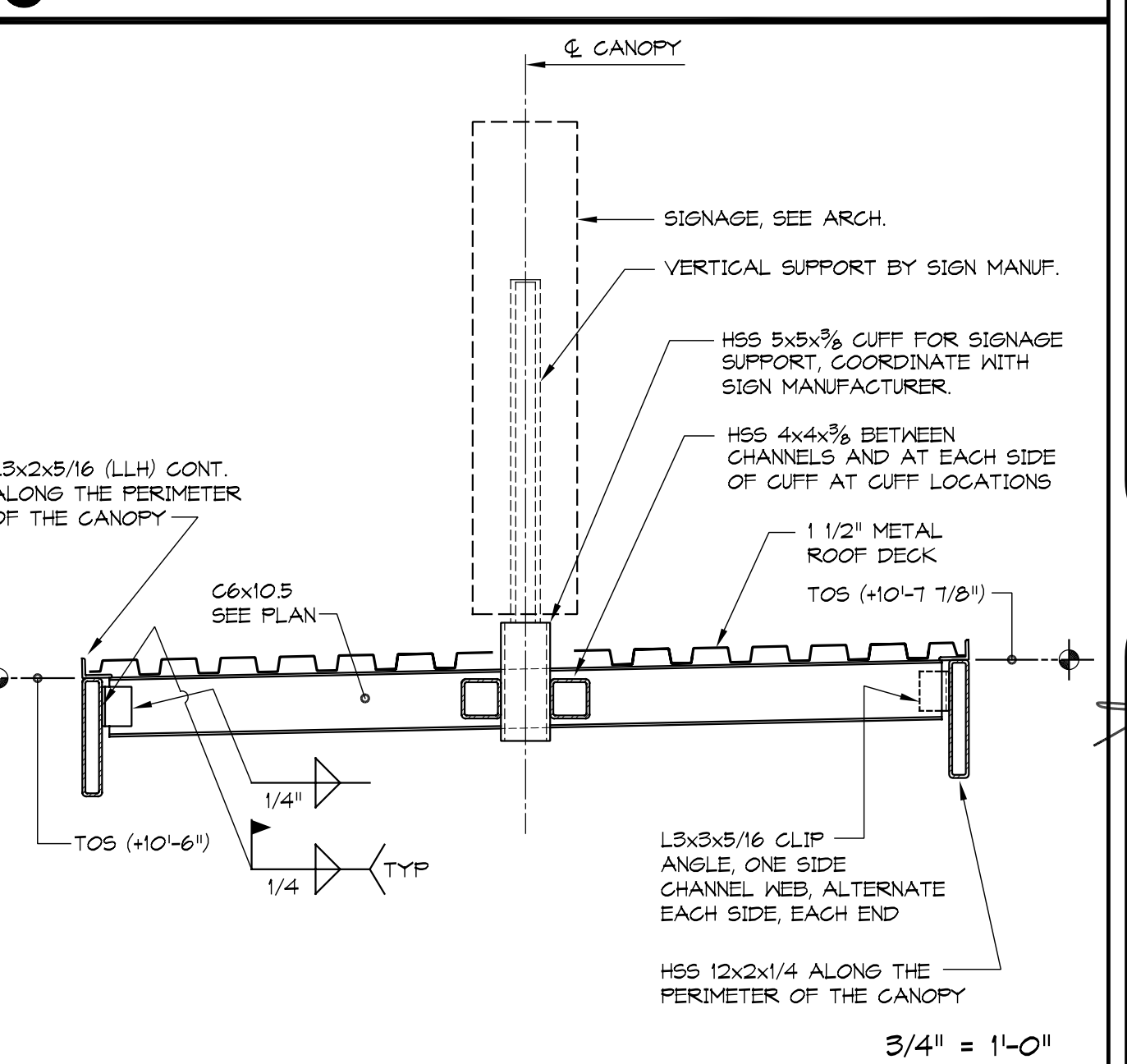
3 SECTION AT ROOF



5 SECTION AT EXTERIOR WALL OPENING



8 TYPICAL BM-COL MOMENT CONNECTION



10 SECTION THROUGH ENTRY CANOPY

**RAMSAY  
BURGIN  
SMITH  
ARCHITECTS**

225 NORTH MAIN STREET - SUITE 501  
SALISBURY, NORTH CAROLINA 28144  
Phone: (704) 633-3121 Fax: (704) 633-5361  
Email: rbsa@rbsaarch.com (www.rbsaarch.com)

PUBLICATION OR REUSE OF THESE DRAWINGS  
OR ANY DETAILS THEREFROM MUST BE WITH  
THE WRITTEN CONSENT OF THE ARCHITECT

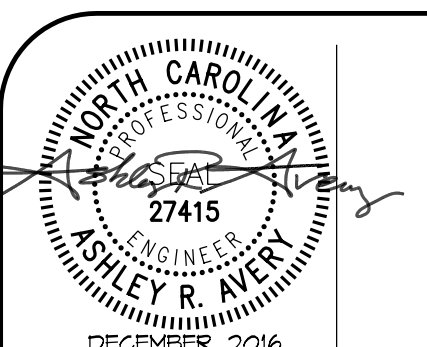
**ABS**  
APPLIED BUILDING SCIENCES, INC.

ENGINEERS, ARCHITECTS AND  
ENVIRONMENTAL CONSULTANTS  
120 GREENWICH ROAD  
CHARLOTTE, NORTH CAROLINA 28211  
OFFICE: (704) 749-3545 FAX: (704) 362-3178

## ROOF FRAMING PLAN AND DETAILS

Rowan/Kannapolis  
ABC STORE &  
WAREHOUSE

SALISBURY  
NORTH CAROLINA



SHEET NO.  
**91.20**  
4 OF 4